



### PT Indonesia Bulk Carrier

Maspion Plaza Building, 5th Floor, Suite G. Jl. Gunung Sahari Raya kav. 18

Phone: +62 21 64701375 (hunting), Fax: +62 21 64701376

Jakarta Utara – 14420, Indonesia

www.indobulk.com

## Tug Boat 2,400 HP

## IBC TARJUN



### PRINCIPAL PARTICULARS

Year of built	: 2009
Classification	: GL & BKI
Flag / Registry	: Indonesia / Jakarta
Imo No.	: 9567362
Construction	: Steel
Speed	: 11 Knots (free run)

### DIMENSIONS

Length (LOA)	: 31 m (101.68 ft)
Breadth	: 9 m (29.29 ft)
Depth	: 4 m (13.12 ft)
Summer Draft	: 3.2 m (10.50 ft)
Gross Tonnage	: 295 T
Net Tonnage	: 89 T

### MACHINERY

Main Engine	: 2 x Cummins KTA-38-M2 @ 1,200 BHP at 1,800 RPM
Gearbox	: 2 x Reintjes WAF 562L1
Generator	: 2 x Cummins 6BT5.9-D(M) @ 122 BHP @ 1,500 RPM
Propulsion	: Twin Screw Fixed Pitch

### TANK CAPACITY

Fuel Oil	: 253 m3
Fresh Water	: 33 m3

### COMMUNICATION / NAVIGATION

SSB	: Icom IC-M710
GPS	: Furuno GPS Nav GP-32
VHF	: IC - M 304
Radar	: GPS MAP 2108
Echo Sounder	: Koden CVS-118MKII
Compass	: T 150 B Daiko Keiki Co.,Ltd
HF Auto Tuner	: AT - 130

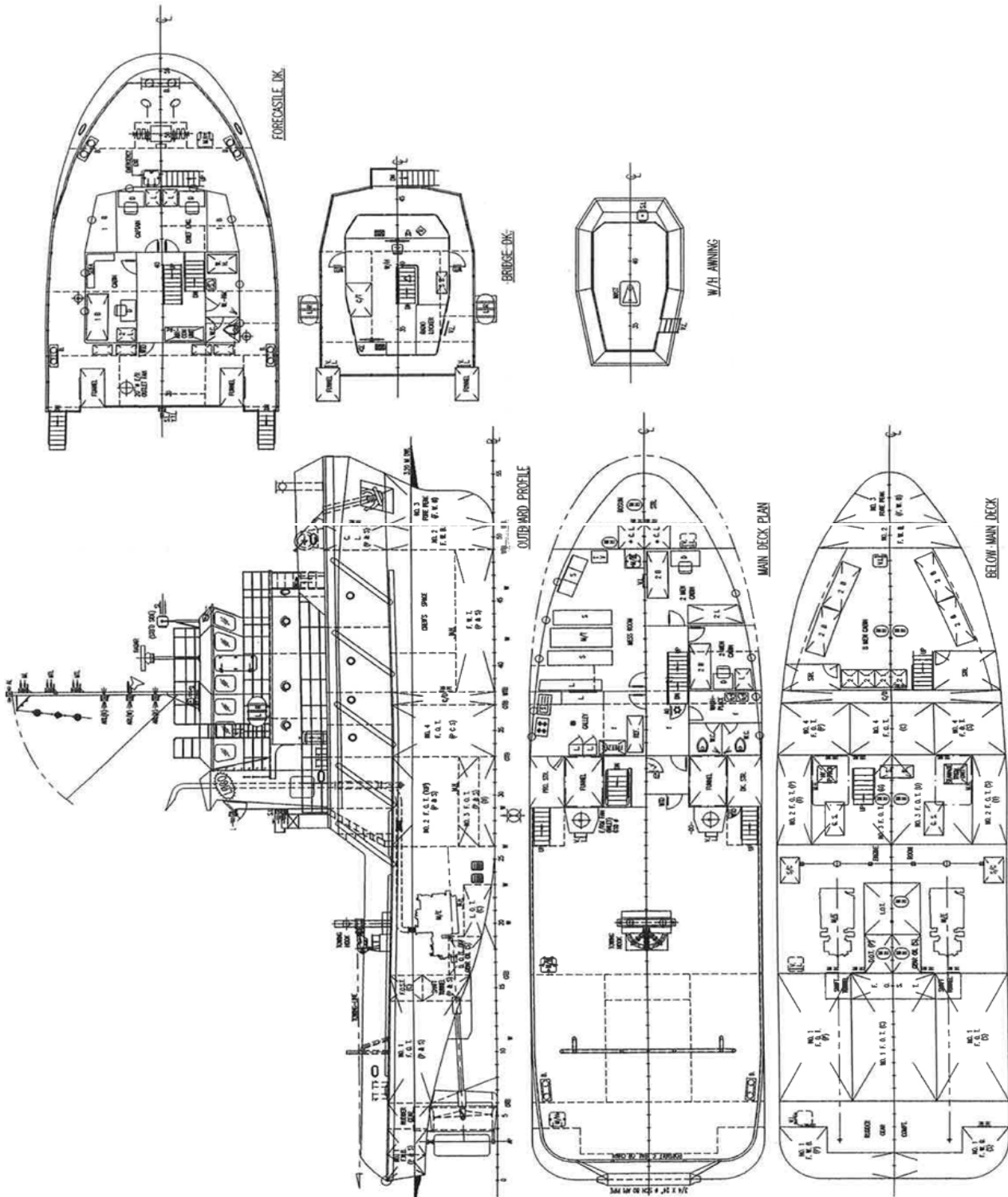
### OTHERS

Towing Winch	: 245HJC - 100T
Towing Hook	: SLTY30 - 30 T

Note : Particulars are believed to be correct but not guaranteed

**Tug Boat**  
**2,400 HP**

**G.A. IBC TARJUN**



Note : Particulars are believed to be correct but not guaranteed